

# DVS Surveillance Client Initial Configuration Guide.

(for Client V7.3 / v7.4)



## Copyright © Dialog Broadband Networks (Pvt) Ltd. 2021. All rights reserved

No part of this document may be reproduced or transmitted in any form or by any mean without prior written consent of Dialog Axiata (Pvt.) Ltd.

## Trademark and Permissions



And other Dialog trademarks are trademarks of Dialog Broadband Networks (Pvt) Ltd. All other trademarks and trade names mentioned in this document are property of their respective holders.

## Notice

The purchased products, services and features are stipulated by the contract made between Dialog and the customer. All or part of the products, services and features describe in this document may not be within the purchase scope or the usage scope. Unless otherwise specified in the contract, all statements, information, and recommendations in this document are provided "AS IS" without warranties, guarantees or representations of any kind, either express or implied.

The information in this document is subject to change without notice. Every effort has been made in the preparation of this document to ensure accuracy of the contents, but all statements, information, and recommendations in this document do not constitute a warranty of any kind, express or implied.

## Dialog Broadband Networks (Pvt) Ltd.

Address: **Dialog Broadband Networks (Pvt) Ltd.**  
No. 475,  
Union Place,  
Colombo 02,  
Sri Lanka

Website: [www.dialog.lk](http://www.dialog.lk)



## About This Document

### Purpose




This document describes the initial configuration methods of Dialog VMS application Surveillance Client and other minor application scenarios.

### Intended Audience

This document is intended for;

- Technical support engineers
- Installation and commissioning engineers
- Field maintenance engineer
- System maintenance engineers

### Symbol Conventions

Symbol	Description
	Indicates a considerable situation which should be considered during installation, if not voided will result in malfunctioning of the services.
	Indicates information that should proceed during installation and configuration, if void will affect future services.
	Calls attention to important information, best practices and tips.



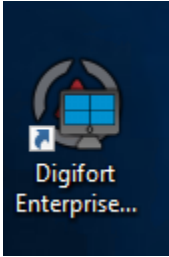
## Change History

Version	Date	Description
1.0	2023-04-25	This issue is the first official release.

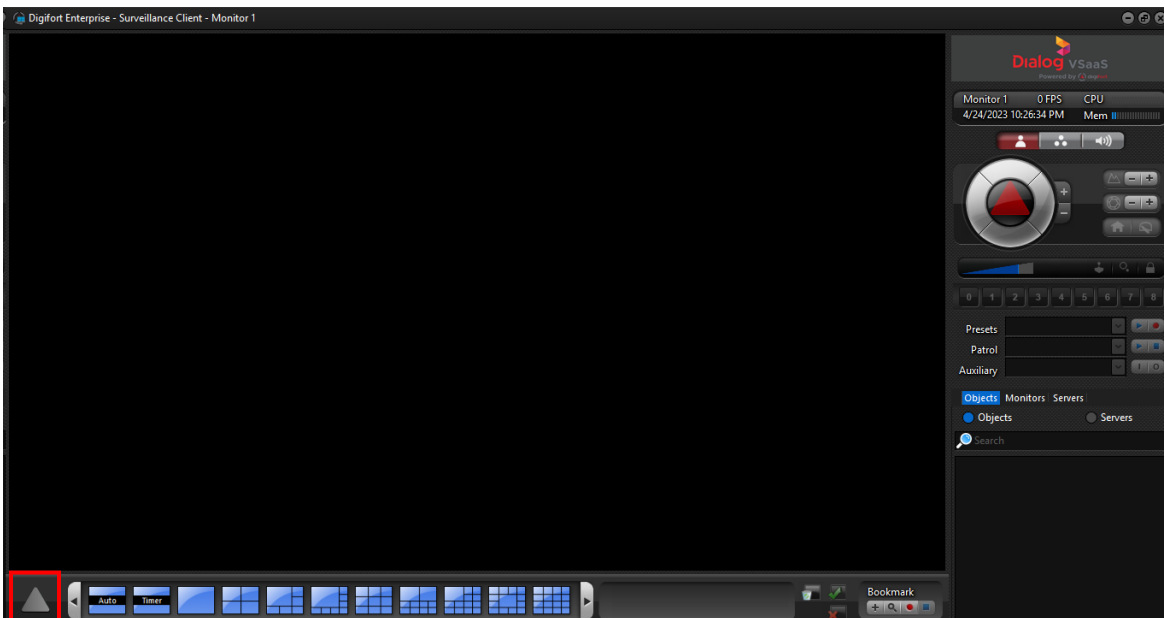


# 1. Configuring Surveillance Client

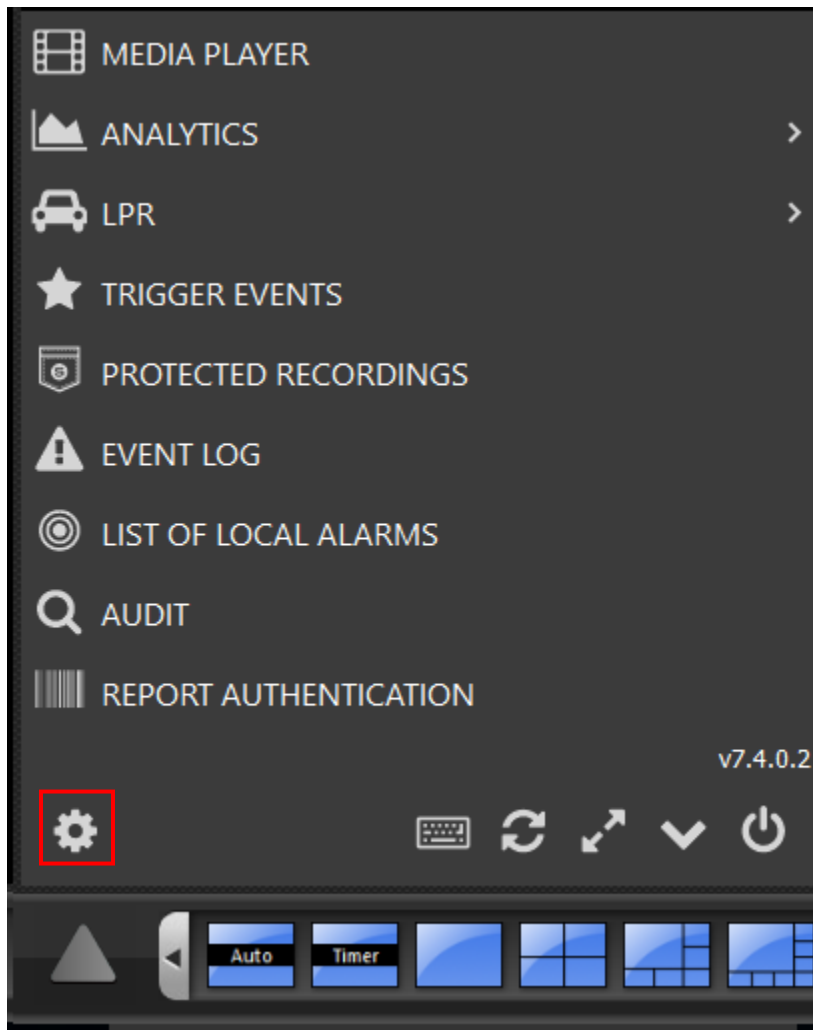
- Open Application by double tapping the desktop shortcut.



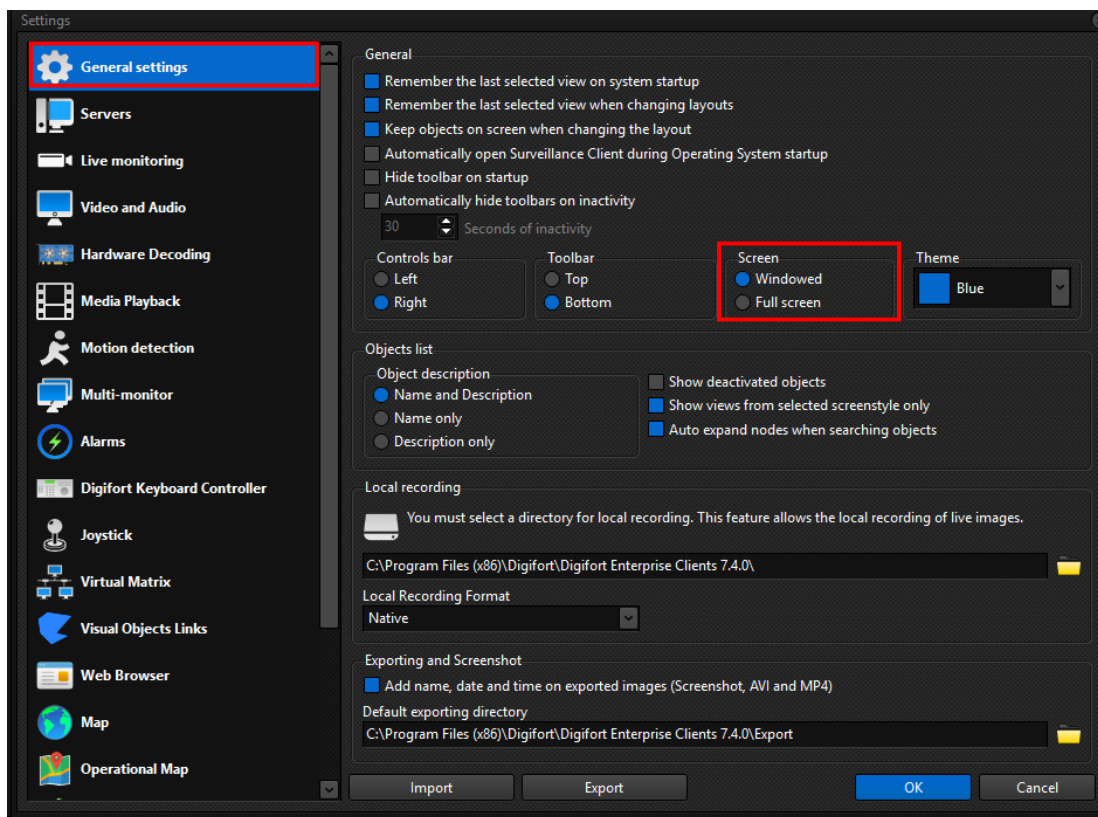
- 2. Click on ▲ in left bottom corner to access advanced features.



- From the popup click on  icon to open settings window.

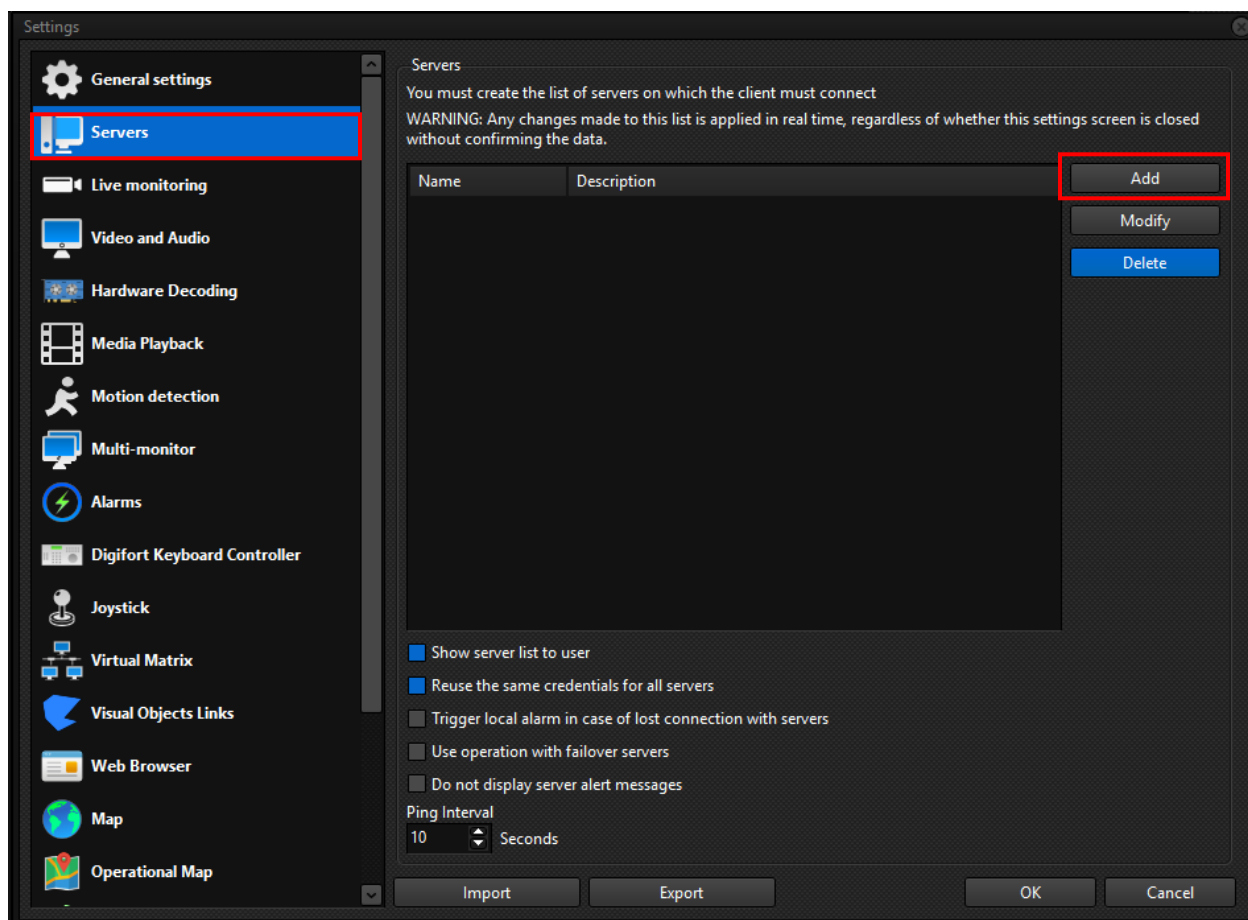


- If you are using a personal PC, under general settings, select screen mode to Windowed. This will enable the ability to minimize the surveillance client.



## 2. How to connect with DVS Cloud.

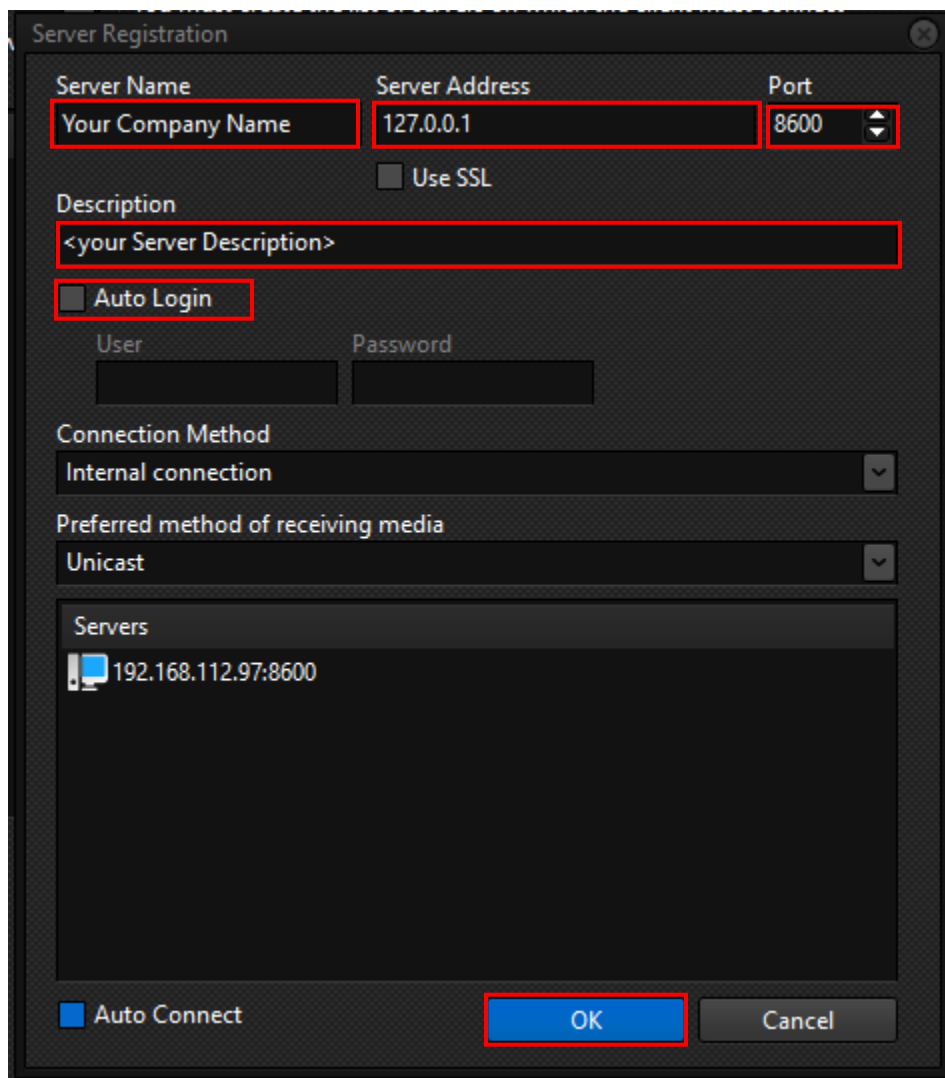
- From the setting window, click on server tab and click Add to configure the connectivity with cloud instance.





- Set the following parameters as shown below.
  - .1. **Server Name:** Create a unique name for your cloud instance. You can use a name as you desired.
  - .2. **Server Address:** Use the IP/URL provided by dialog team.
  - .3. **Port:** Use the port number provided by dialog team. If not provided, keep the default value.
  - .4. **Description:** Create a description for your server.
  - .5. **Auto Login:** Enable if only you are using the pc. **Also, do not enable this feature without changing your default password to a complex personal password.**

Keep other configurations as it is and click OK.



Server Registration

Server Name: Your Company Name

Server Address: 127.0.0.1

Port: 8600

Use SSL

Description: <your Server Description>

Auto Login

User: [ ] Password: [ ]

Connection Method: Internal connection

Preferred method of receiving media: Unicast

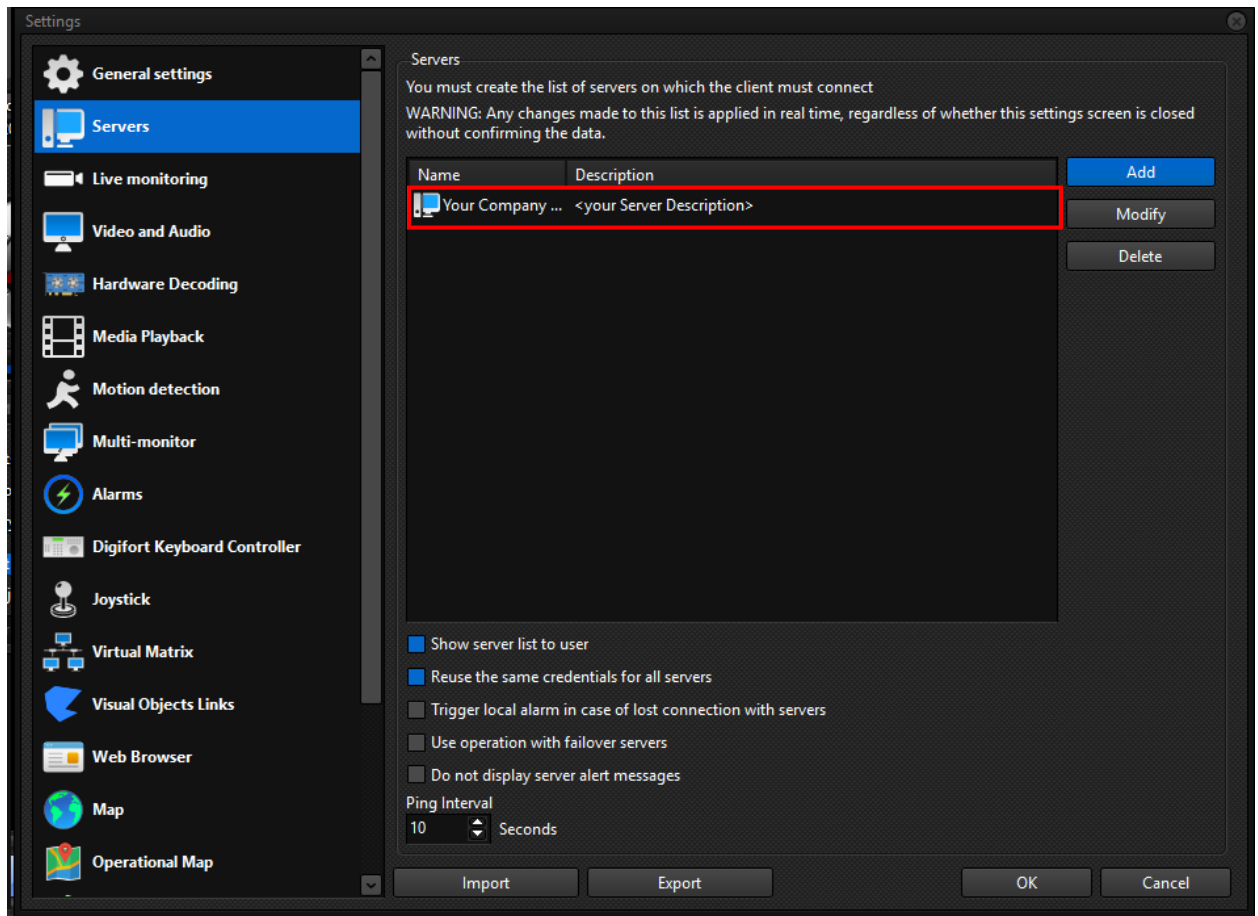
Servers: 192.168.112.97:8600

Auto Connect

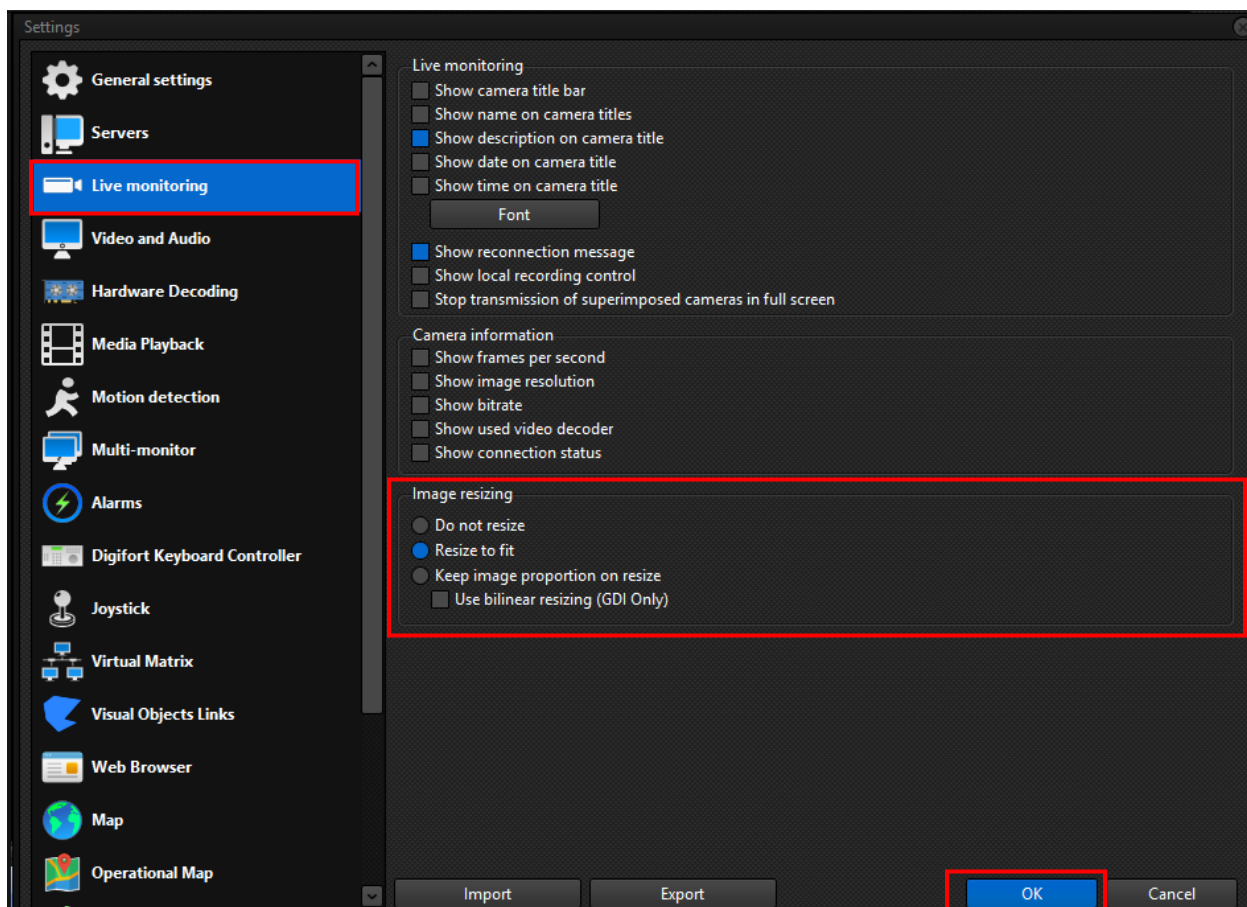
OK Cancel



- Your server instance will be displayed as follows.

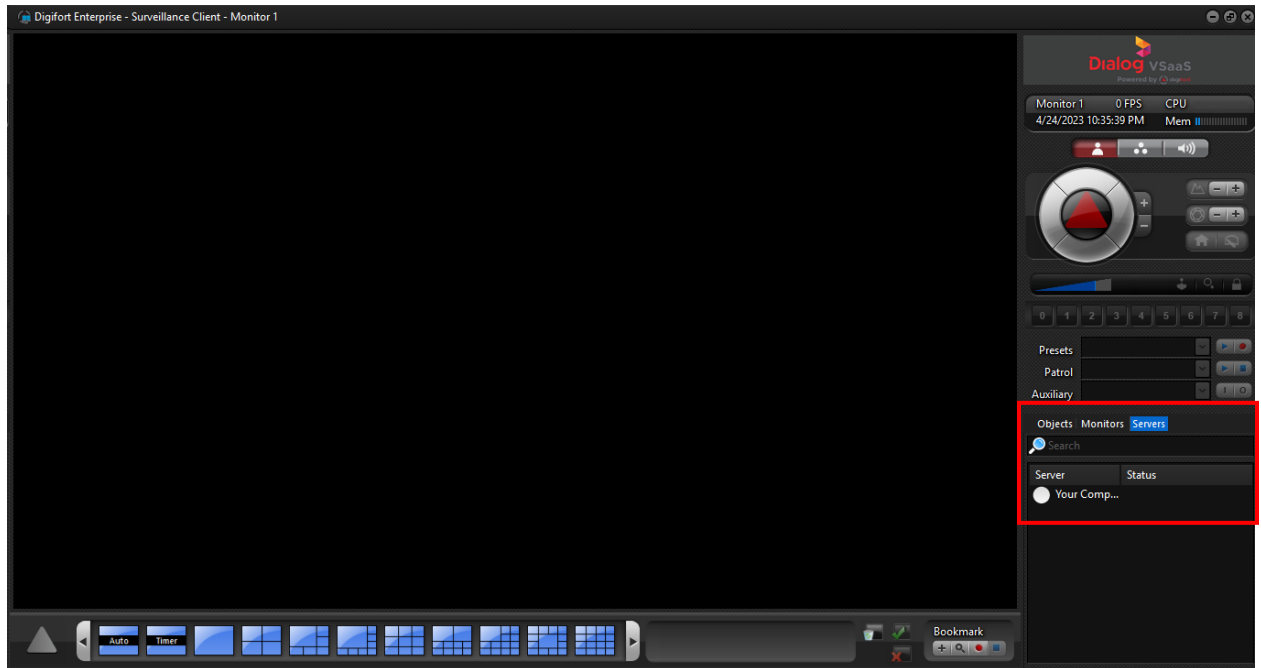


- To resize the camera views to fill the current screen, click on live monitoring and, select resize to fit from image resizing section. Click OK to close the setting window.

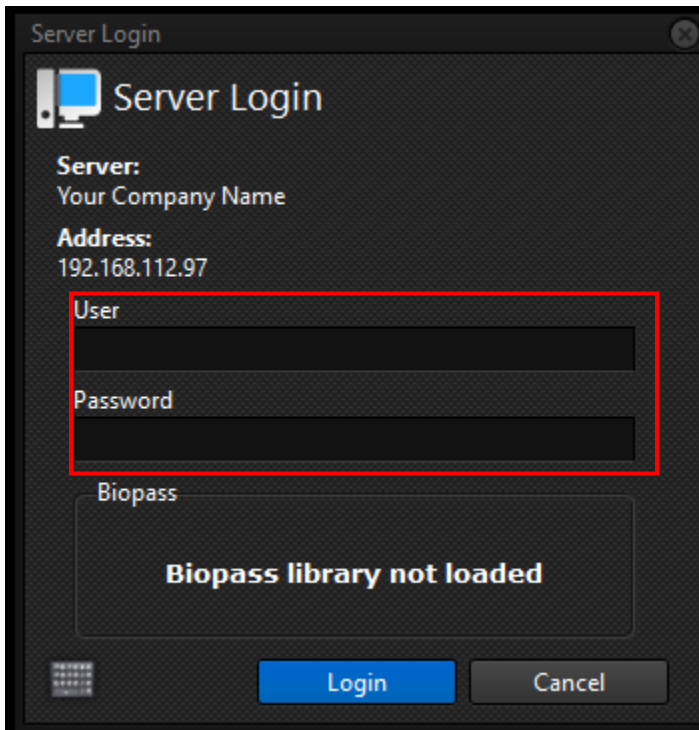


### 3. Connecting With Cloud Instance

- Your server will be displayed under Servers tab as follows. Double click on the server name to establish the connectivity with cloud instance.



- Your credentials will be prompted. Provide your credentials as provided by dialog team and click login.



- Once successfully authenticated, the server icon will be turned to green and you are ready to go.

